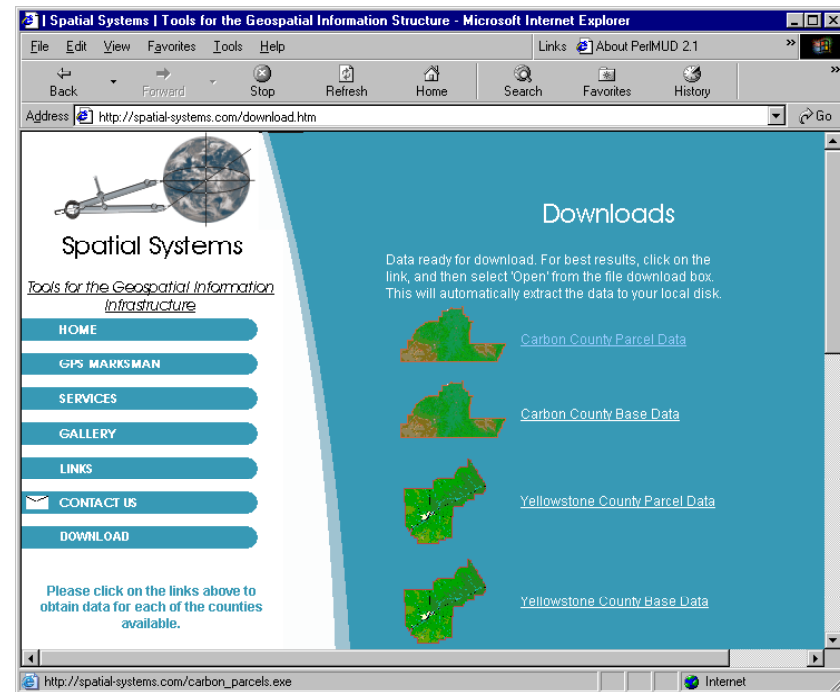


# Select County Data

[Downloading data from the Spatial Systems Data Download page](#)

Click link

The first step in downloading data for use with GPS Marksman is to select the link for the county of interest.

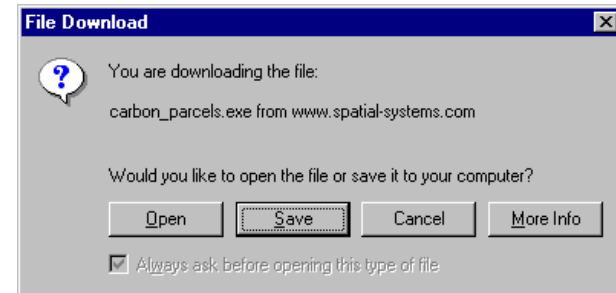


# Transfer the data to your computer

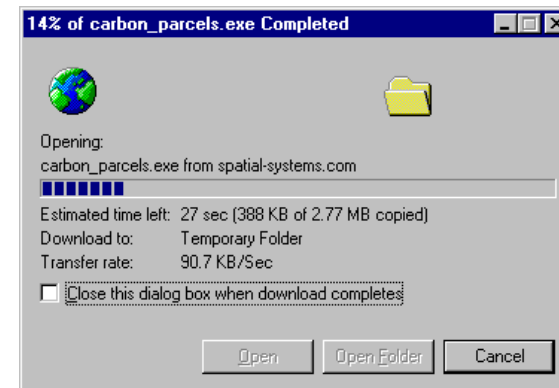
[Downloading data from the Spatial Systems Data Download page](#)

Click the 'Open' button to begin extraction

After selecting the link, you will be prompted to 'Open' or 'Save' the file. Choose the 'Open' button (on some browsers this may be labeled 'Run') to begin the extraction process.



A status bar similar to the one below will indicate that the file has begun to transfer.



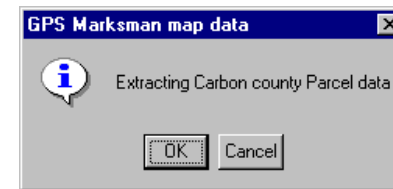
# Extract the data to your hard disk

[Downloading data from the Spatial Systems Data Download page](#)

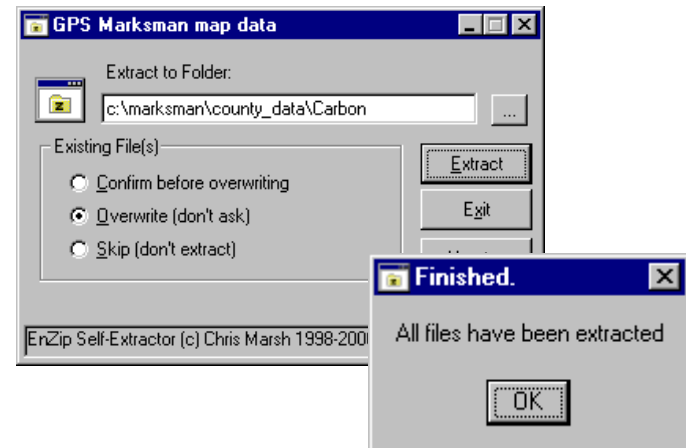
Click OK to begin extraction

Input the location where the data should be extracted

Once the transfer is complete, the extraction program will begin. Click OK to continue.



Input the directory where you would like your data to be extracted. By default it will attempt to put the data on your C drive in the Marksman directory. Select the 'Extract' button to begin the process. The files will be unpacked and placed in the specified directory. The 'Finished' box will appear when the data has been extracted.

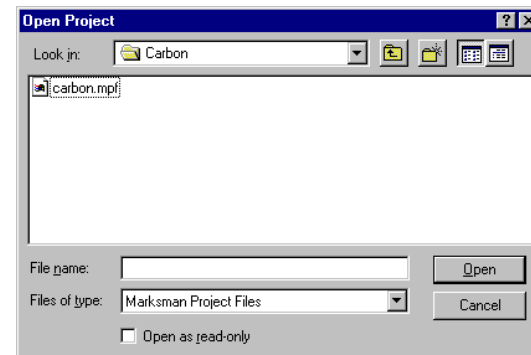


# Open the data with GPS Marksman

[Downloading data from the Spatial Systems Data Download page](#)

## Activate GPS Marksman

You can activate GPS Marksman by clicking on the icon on the desktop. You can also activate it by choosing it from the Programs menu. (Different operating systems vary). From the Menu select 'File' then 'Open'. The Open Project form will appear. Find the directory where you saved the data and click on the desired Marksman Project File (\*.mpf). Click the 'Open' button and the project will begin loading.



# Use your data with GPS Marksman

[Downloading data  
from the Spatial Systems  
Data Download page](#)

Activate GPS  
Marksman

Once your data has finished loading, it should be available for use. You may now view, query, or print the information available. It is also available to transfer to your hand held unit and take into the field!

